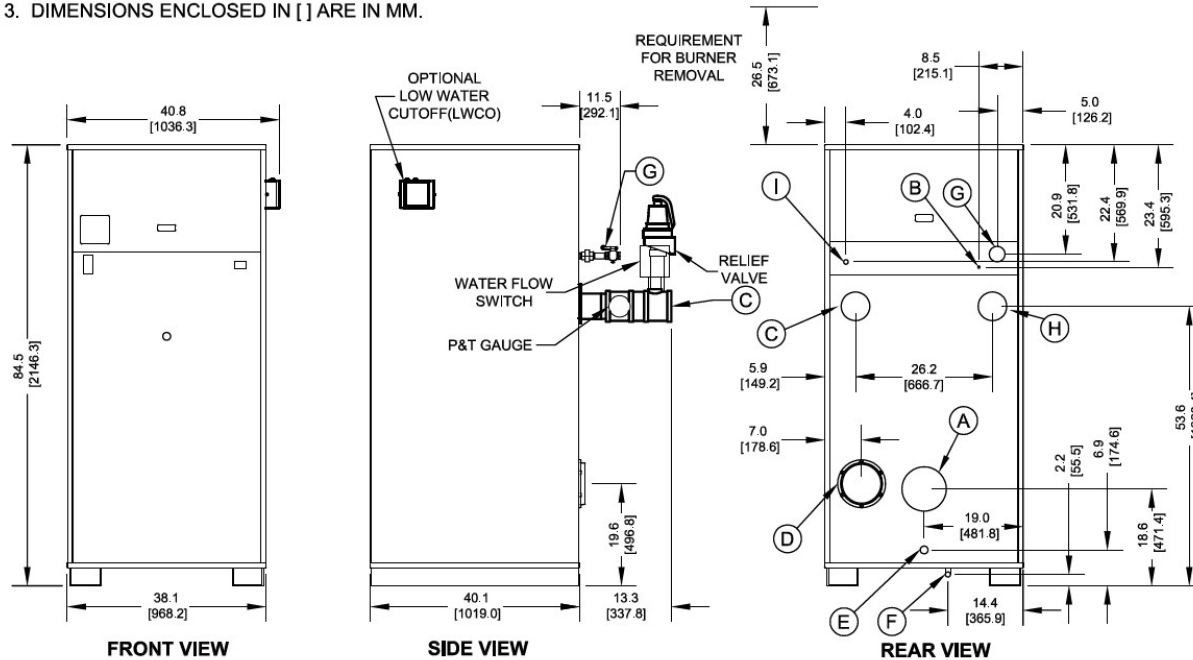


# Submittal Data Sheet

**NOTES:**

1. SEE O&M FOR REQUIRED INSTALLATION CLEARANCES.
2. DIMENSIONS SHOWN ARE FOR REFERENCE ONLY.
3. DIMENSIONS ENCLOSED IN [ ] ARE IN MM.



KEY	DESCRIPTION	
A	Flue Outlet	8" [203.2] Diameter (AL29-4C SS)
B	Factory Installed Pilot Gas Line	1/4" [6.4] O.D. Tube
C	Water Supply to System	4" NPT
D	Inlet Air	8" [203.2] Diameter
E	Drain, Startup Condensate	5/8" [15.9] O.D. Tube SS
F	Appliance Drain	1" NPT
G	Gas Supply	2" NPT
H	Water Return from System	4" NPT
I	Optional Gas Train Vent	3/4" NPT (D.B.&B & D.B.&B w/ POC Only)

**NOTES:**

1. SEE O&M FOR REQUIRED INSTALLATION CLEARANCES.
2. DIMENSIONS SHOWN ARE FOR REFERENCE ONLY.
3. DIMENSIONS ENCLOSED IN [ ] ARE IN MM.

# Submittal Data Sheet

## RATINGS AND CAPACITIES

Input (MBH):	3,000,000	BTU/HR
Output (MBH):	2,610,000	BTU/HR
Boiler Horsepower:	78.0	BTU/HR
Thermal Efficiency:	87.0%	BHP
Heating Surface:	767	Sq.Ft.
Water Content:	43.1	Gallons
Fuel:	<b>Natural Gas or LP Gas</b>	
Firing Rate:	<b>Reliable Modulation</b>	
Burner Turndown:	<b>3:1</b>	
Low NOx Emissions:	<b>&lt;10 ppm</b>	
Inlet Gas Pressure (NG):	<b>See Chart at right</b>	
Inlet Gas Pressure (LP):	<b>See Chart at right</b>	

\* This data supercedes data found on Table 3 of I&O Manual, per PRODUCT UPDATE issued June 6, 2024.

Shipping Weight, Approximate: **2,193** lbs

ASME Section IV (Max 160 PSIG / 250°F)

Setpoint range is 145-230°F

Adjustable, manual reset high limit setting of ≤ 240°F.

ASME H stamp MAWT is 250°F for the vessel. (For max setpoint, see Setpoint range.)

UL Certified to ANSI Z21.13 / CSA 4.9

UL Certified to UL 795 / CSA 3.1



## DIMENSIONS / CONNECTIONS

Height:	84 1/2"	(Note 1)
Width:	38 1/8"	(Note 2)
Length:	40 1/8"	(Note 3)
Supply Connection:	4"	
Return Connection:	4"	
Vent / Air Intake Connections:	8" Vent	8" Intake
Condensate / Appliance Drain Connection:	5/8" Condensate Tube	1" NPT Drain
Gas Connection:	2"	

## NOTES:

1. Height dimension is from floor to top of jacket.

2. Length is from jacket front to jacket rear.

3. Dimensions shown are for reference only

## FLOWS AND PRESSURE DROPS

Delta T	Flow (GPM)	ΔP (Ft. Hd)
20°F ΔT	<b>261 (Max)</b>	<b>4.41</b>
40°F ΔT	<b>131 (Min)</b>	<b>1.73</b>

## Electrical Supply Options

	120v/60hz/1ph (Standard)	N/A
<input type="checkbox"/> 208v/60hz/1ph		8 amps
<input type="checkbox"/> 230v/60hz/1ph		7.8 amps
<input type="checkbox"/> 208v/60hz/3ph		7.4 amps
<input type="checkbox"/> 230v/60hz/3ph		7.3 amps
<input type="checkbox"/> 460v/60hz/3ph		3.7 amps

## Blower Motor (hp)

2

## Relief Valve Options

<input type="checkbox"/> 30 psi	<input type="checkbox"/> 50 psi	<input type="checkbox"/> 60 psi
<input type="checkbox"/> 75 psk	<input type="checkbox"/> 100 psi	<input type="checkbox"/> 125 psi
<input type="checkbox"/> 150 psi		

## Inlet Gas Pressure

SIZE	Nat. Gas Min. ("w.c.)	LP Min. ("w.c.)	Max
500	5.0" w.c.	8.0" w.c.	14.0" w.c.
750	7.0" w.c.*		
1000	7.0" w.c.*		
1500	7.0" w.c.*		
2000	9.0" w.c.*	9.0" w.c.	
2000s	7.0" w.c.	8.0	
2500	6.0" w.c.		
3000	6.0" w.c		

\* NOTE: Optional natural gas train with 4" w.c. minimum inlet gas pressure ONLY  
AVAILABLE on sizes 750, 1000, 1500 & 2000.

# Submittal Data Sheet

STANDARD EQUIPMENT		OPTIONAL EQUIPMENT		
<div style="background-color: #ccc; text-align: center; font-weight: bold; margin-bottom: 5px;">PRESSURE VESSEL DESIGN</div> <p>Copper Fin-tube construction Carbon steel or cast iron header design Gasketless heat exchanger ASME Section IV certified "H" stamp MAWP 160 PSI &amp; max design temp 250°F 5-year heat exchanger warranty 20-year thermal shock warranty</p>	<div style="background-color: #ccc; text-align: center; font-weight: bold; margin-bottom: 5px;">BOILER EQUIPMENT</div> <p>Siemens RWF55 operating control High limit w/ manual reset safety temperature control Water flow switch Low water cut-off with manual reset safety controller Outlet temperature sensor Combustion air switch Pressure and temperature gauge Safety relief valve (Optional pressure 30 - 150 PSI; See details above.)  Single point electrical supply; (Available in: 1 and 3 phase options. See details above.)</p>	<div style="background-color: #ccc; text-align: center; font-weight: bold; margin-bottom: 5px;">OPTIONAL EQUIPMENT</div> <p>Low gas pressure venturi, 4" wc (AVAILABLE ONLY on Models 750-2000) [FACTORY INSTALLED OPTION ONLY]</p> <div style="display: flex; justify-content: space-between;"> <div> <input type="checkbox"/> Line Reactor Adds voltage / spike protection for the blower's VFD. (<i>Highly recommended for areas with dirty voltage.</i>)   <input type="checkbox"/> Honeywell 7800 Series display with ModBus Module             Line Reactor Adds voltage / spike protection for the blower's VFD. (<i>Highly recommended for areas with dirty voltage.</i>)   <input type="checkbox"/> Outdoor Air Sensor  <input type="checkbox"/> Condensate neutralizer:           <div style="display: flex; justify-content: space-around; margin-top: 5px;"> <span><input type="checkbox"/> 850 MBH</span> <span><input type="checkbox"/> 1,200 MBH</span> </div> <div style="display: flex; justify-content: space-around;"> <span><input type="checkbox"/> 2,000 MBH</span> <span><input type="checkbox"/> 5,000 MBH</span> </div> </div> <div> <input type="checkbox"/> Pump Kit (Boiler Circulation Pump, Pump Flange Kit Sized based on a 20°F Delta T)   <input type="checkbox"/> Annual Maintenance Kit  <input type="checkbox"/> System Temperature Sensor  <input type="checkbox"/> ModBus RS485 communication for Siemens RWF55 and Honeywell Flame Safeguard Control (Boiler to BMS System)  <input type="checkbox"/> Universal comms. gateway (BACnet MS/TP, BACnet/IP, N2, Modbus TCP )  <input type="checkbox"/> Local / remote switch  <input type="checkbox"/> Alarm bell with silencing switch  <input type="checkbox"/> Relays:           <div style="display: flex; justify-content: space-around; margin-top: 5px;"> <span><input type="checkbox"/> General Alarm</span> <span><input type="checkbox"/> Boiler Status</span> </div> </div> <input type="checkbox"/> Conductor Sequencing Panel: Req. for multiple EVA applications without BMS. Contact your RSM with Questions.)         </div>		
<div style="background-color: #ccc; text-align: center; font-weight: bold; margin-bottom: 5px;">COMBUSTION DESIGN</div> <p>Maintenance-free ceramic burner Ultr-low NOx emissions (&lt;10ppm) Whisper quiet operation (&lt;50 dBA) Easy to service, 99% efficient industrial air filter Industrial cast aluminum blower assembly VFD Driven Blower Reliable electric spark-to-pilot ignition 10-year burner warranty Honeywell UV-Scanner</p>	<div style="background-color: #ccc; text-align: center; font-weight: bold; margin-bottom: 5px;">BURNER EQUIPMENT</div> <p>UL/FM/CSD-1 gas train Reliable Turndown Natural or LP gas Pilot gas valve / Pilot gas regulator Siemens SKP-75 gas valve Low and high gas pressure switches with manual reset</p>	<div style="background-color: #ccc; text-align: center; font-weight: bold; margin-bottom: 5px;">SIEMENS RWF55 OPERATING CONTROL FEATURES</div> <p>Adjustable set point Remote set point (0-10v or 4-20 mA) Outdoor air temperature reset</p>		
<div style="background-color: #ccc; text-align: center; font-weight: bold; margin-bottom: 5px;">VENTING</div> <p>Sealed or room air combustion Direct vent (sidewall or vertical) (Cat IV) Conventional venting (Cat II) <i>NOTE: This is NOT a Cat I Vent appliance.</i></p>	<p>The Conductor Sequencing Panel manages multiple condensing &amp; non-condensing, small &amp; large heat output, new and/or existing boilers (full modulation ), and steam or hot water applications. It helps improve system efficiency by selecting and modulating the right boiler to match operating conditions. The Conductor offers a single point boiler plant Energy Management System (EMS) interface including Modbus TCP/IP, Modbus RTU RS485, BACnet/IP and BACnet MSTP standard. If Lonworks needed, add for the separate Lonworks gateway.</p>			
Extended Warranty Options Available:				
		3-Year	5-Year	10 Year
<u>Parts Only</u>		<input type="checkbox"/>	<input type="checkbox"/>	<input type="checkbox"/>
<u>Parts and Labor</u>		N/A	<input type="checkbox"/>	<input type="checkbox"/>